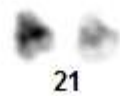
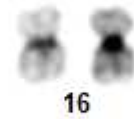
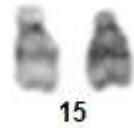
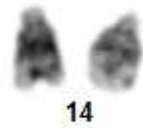
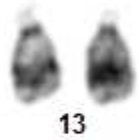
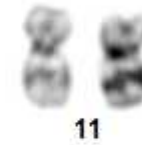
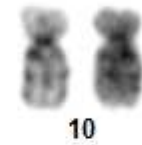
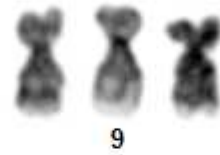
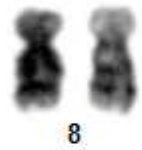


QUESTO 1

1A Che cos'è l'ibridazione fluorescente in situ? Quali sono gli ambiti di applicazione e i punti critici della metodica?

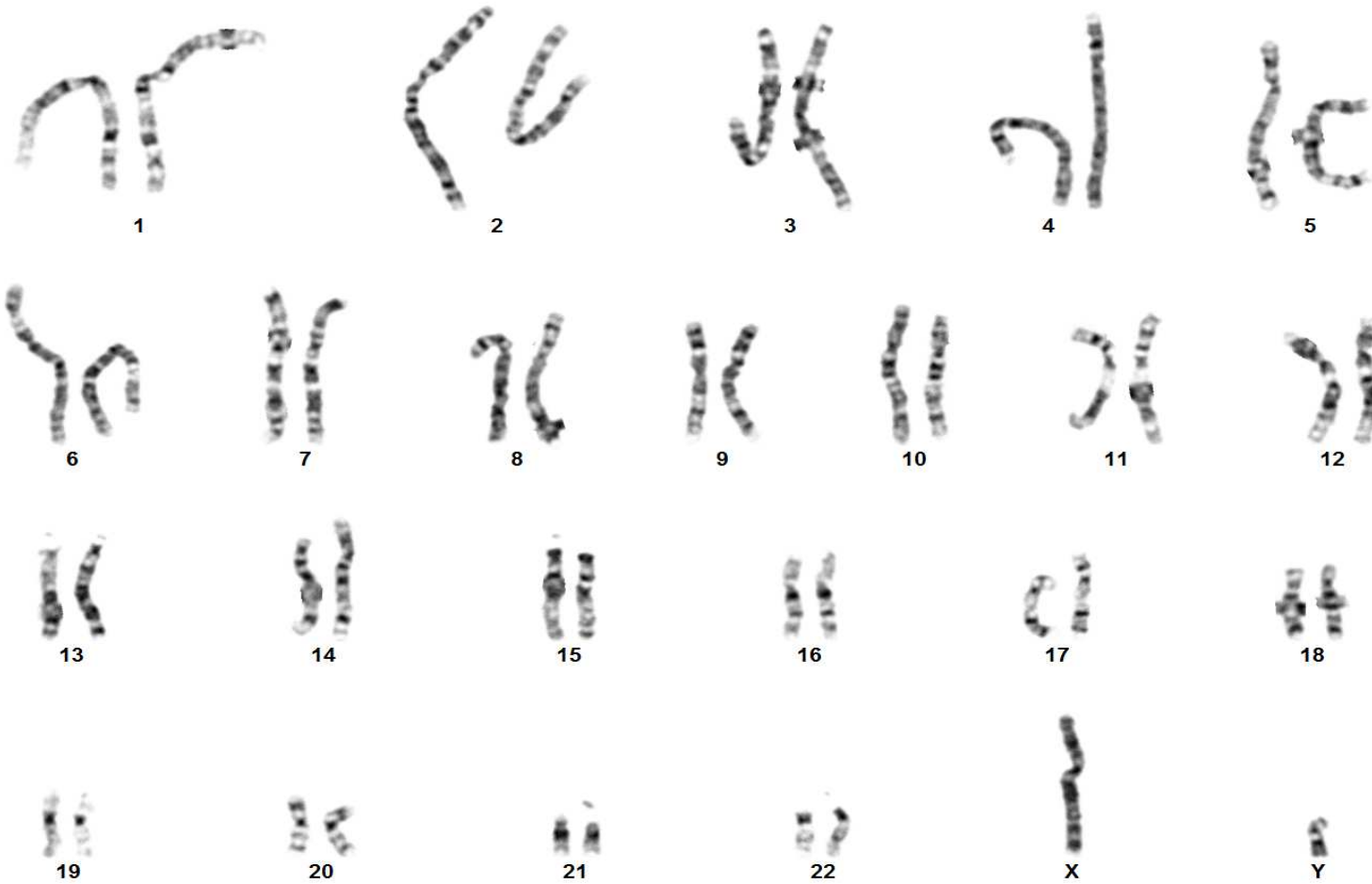
1B Osservi il cariotogramma ed evidenzi eventuali anomalie cromosomiche



QUESITO 2

2A Che cos'è l'analisi citogenetica classica? Per quale motivo è utile in ambito oncoematologico?

2B Osservi il cariotogramma ed evidenzi eventuali anomalie cromosomiche



QUESITO 3

3A Fornisca una definizione di cariotipo complesso e indichi quali di quelli elencati in tabella è un cariotipo complesso.

A)	46,XX,t(9;22;17)(p14;q22q32)[7]/46,XX[13]
B)	46,XYder(5)t(5;17)(q11;q11),r(17)(p11q11)[9],46,XY[11]
C)	47,XX,del(5)(q14q34),+8,i(17)(q10)[5]/46,XX[15]
D)	44,XY,del(4)(q25q31.3),der(5)t(5;15)(q14q22),del(6)(q21q25),der(7)del(7)(p11)del(7)(q11),+8,+8,der(11)t(6;11)(?;11.2),-18,-20,der(19;22)(q10;q10)

3B Osservi il cariotogramma ed evidenzi eventuali anomalie cromosomiche

