

Tavola 2

NO₂ - ug/m³
99.8-imo percentile medie 1h
stima CALMET/CALPUFF
anno 2008

riferimento normativo:
DLgs 155/2010
valore limite per la protezione
della salute
200 ug/m³ (18 sup./anno)

Legenda

NO_x - ug/m³

(0, 20]

(20, 40]

(40, 80]

(80, 100]

(100, 175]

■ cemeniteria

□ confini comunali

1:60,000

0 1 2 km

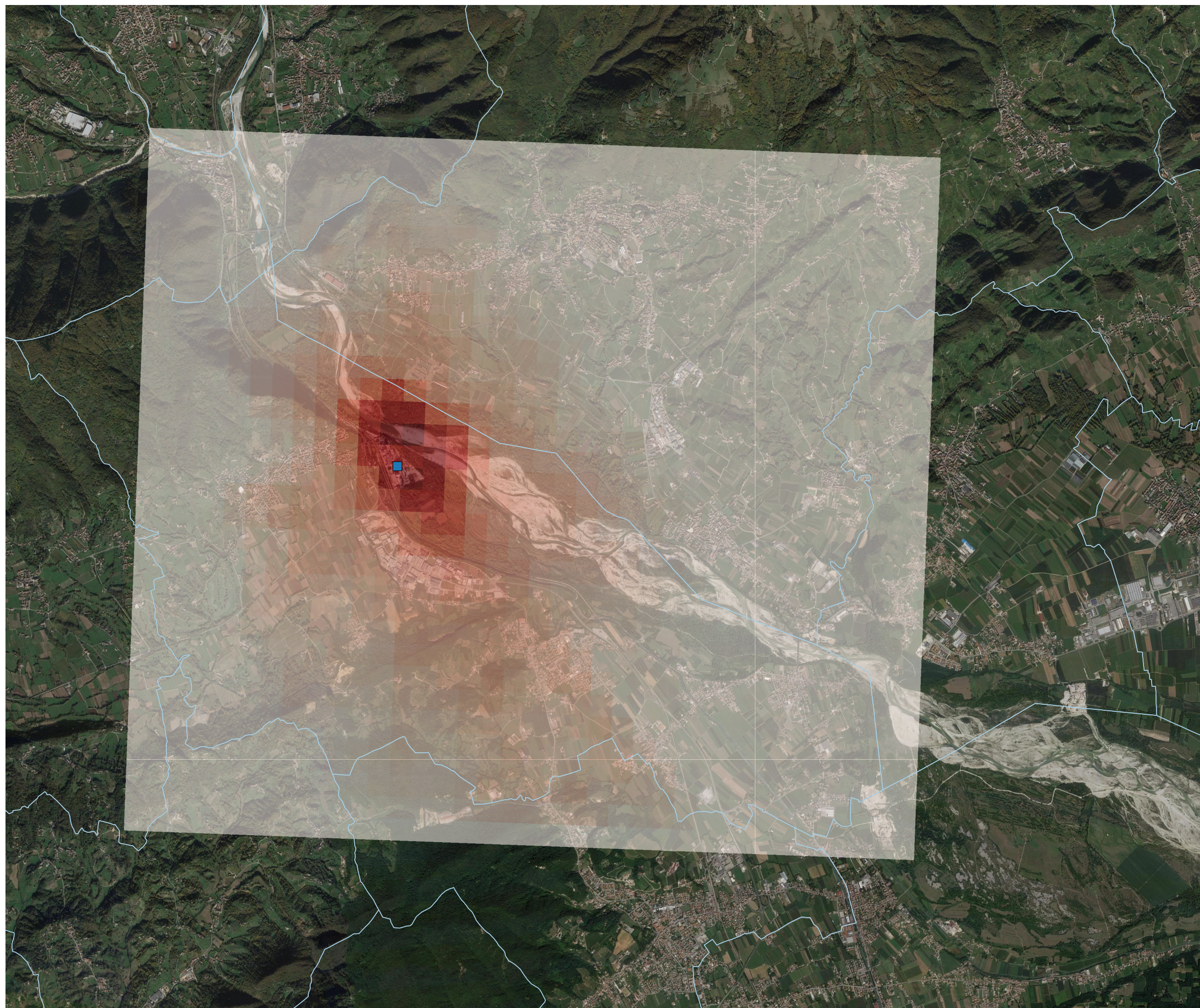



Tavola 3

PM10 - ug/m3
media annuale medie 24h
stima CALMET/CALPUFF
anno 2008

riferimento normativo:
DLgs 155/2010
valore limite per la
protezione della salute
40 ug/m3

Legenda

PM - ug/m3

(0,000, 0.001]

(0.001, 0.01]

(0.01, 0.02]

■ cementeria

□ confini comunali

1:60,000

0 1 2 km

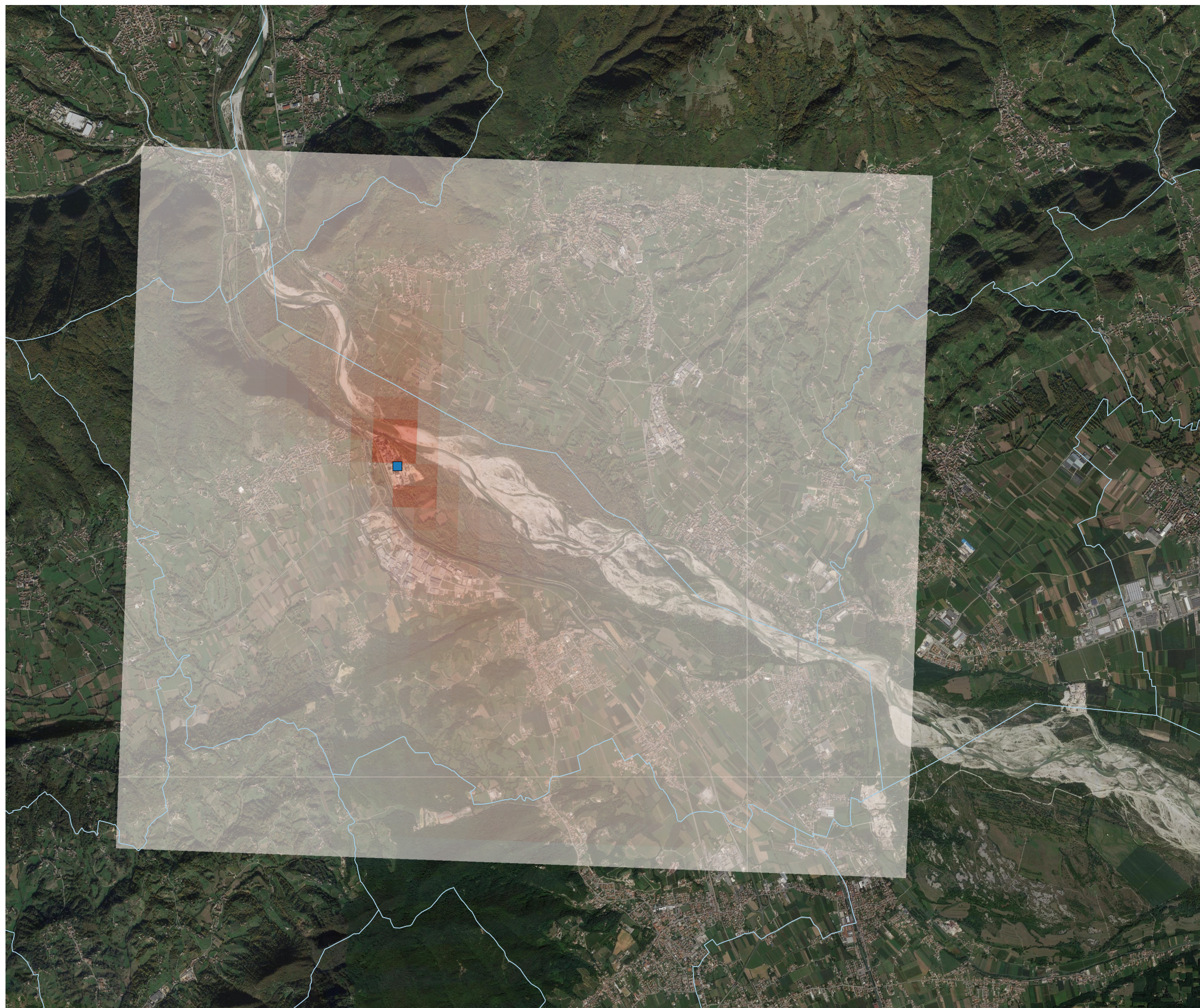



Tavola 4

PM10 - ug/m3
90.1-imo percentile medie 24h
stima CALMET/CALPUFF
anno 2008

riferimento normativo:
DLgs 155/2010
valore limite per la protezione
della salute
50 ug/m3 (35 sup./anno)

Legenda

PM - ug/m3

(0.00, 0.01]

(0.01, 0.02]

(0.02, 0.04]

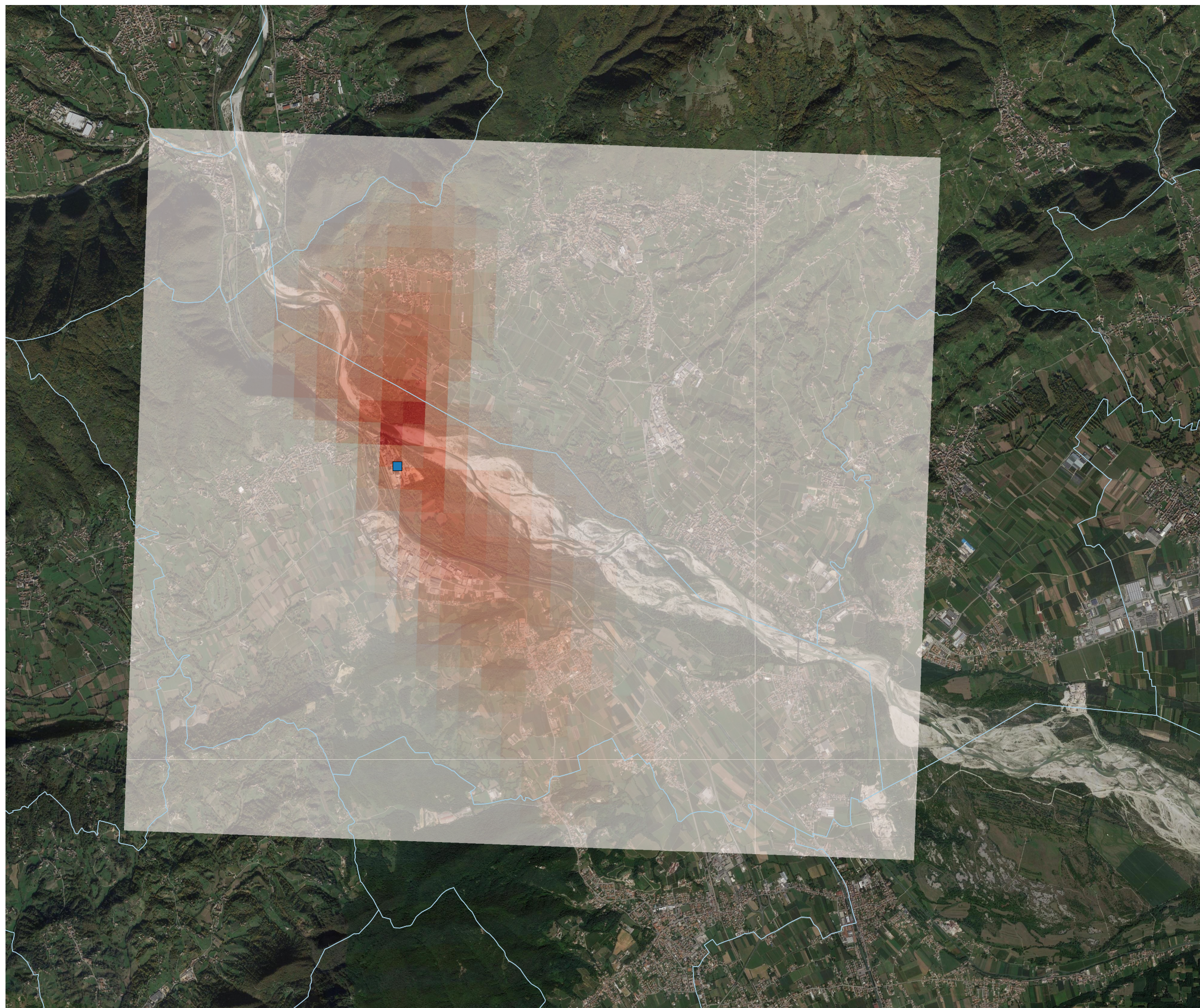

(0.04, 0.06]

■ cementeria

□ confini comunali

1:60,000

0 1 2 km



Dipartimento Provinciale di Treviso

Servizio Monitoraggio e Valutazioni

Via Santa Barbara, 5/a

31100 Treviso (TV)

Italy

Tel. +39 0422 558541

fax. +39 0422 558516

e-mail: daptv@arpa.veneto.it

e-mail certificata: daptv@pec.arpav.it

dicembre 2019



ARPAV

Agenzia Regionale
per la Prevenzione e
Protezione Ambientale
del Veneto

Direzione Generale
Via Ospedale Civile, 24
35121 Padova (PD)
Italy
tel. +39 049 82 39301
fax. +39 049 66 09 66
e-mail: urp@arpa.veneto.it
e-mail certificata: protocollo@pec.arpav.it
www.arpa.veneto.it